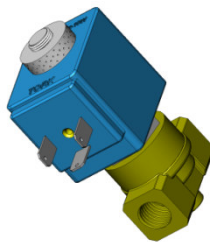
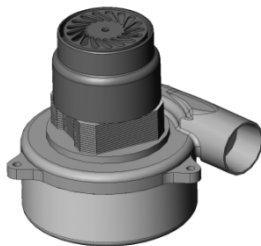
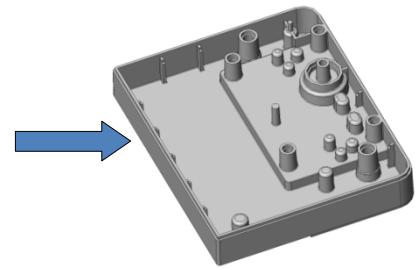
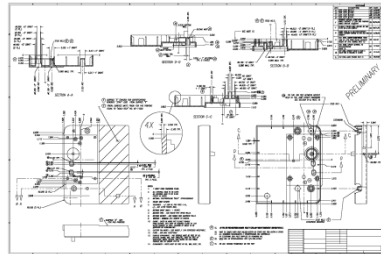


MONACO DESIGN GROUP

MONACO DESIGN GROUP is committed to providing high quality solutions for your 3D modeling needs. In working together, we are able to help customers meet their CAD requirements and ensure that they have the resources necessary to keep their projects moving forward.

2D to 3D Conversion:

We provide modeling services for customers making the transitions from the 2D to the 3D world. We can assist in converting your old legacy drawings into detailed, three-dimensional models.

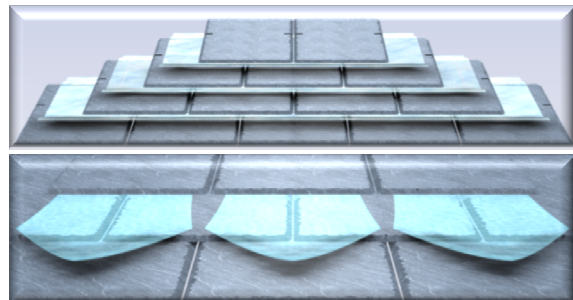


Modeling of Components:

During product design, it is critical that you have accurate models of the components you will be utilizing in your assemblies. We can take any components you intend on using and generate an accurate 3D model which you can import into your assemblies to verify form and fit within your product.

Photo-Realistic Renderings and Animations:

By applying textures and lightings to your designs, we are able to generate realistic images of your product which can be used for presentations or marketing. We can also create animations demonstrating how a product functions or how it is assembled. All of this can be completed during the design phase, allowing products to be more fully reviewed before investing in prototypes or tooling.



What is a Certified SolidWorks Professional?

A Certified SolidWorks Professional is an individual that has successfully passed the SolidWorks advanced skills examination. Each CSWP has proven their ability to design and analyze parametric parts and moveable assemblies using a variety of complex features in SolidWorks.

Monaco Design Group, LLC
PO Box 21510
South Euclid, Ohio 44121-0510

Phone: (216) 632-1307
Website: www.MonacoDesignGroup.com
E-mail: LMonaco@MonacoDesignGroup.com